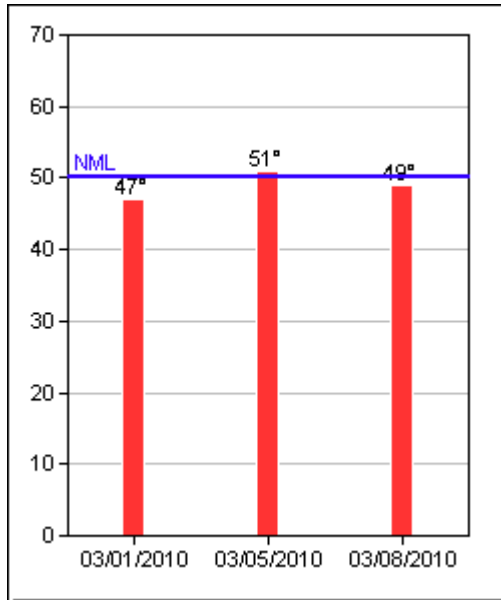


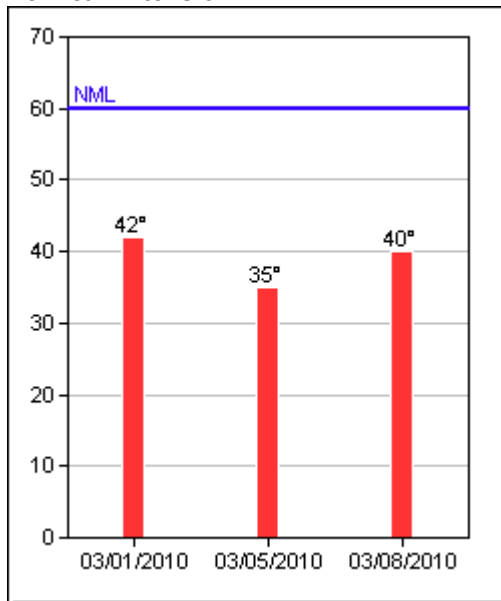
Cervical Flexion



Normal ROM: 50°

Measured with dual inclinometers

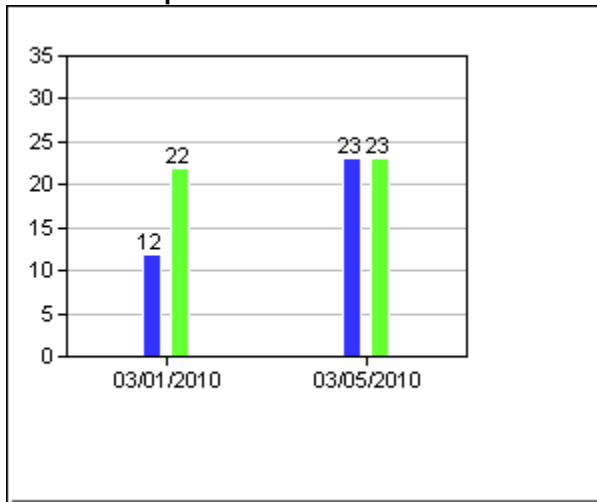
Cervical Extension



Normal ROM: 60°

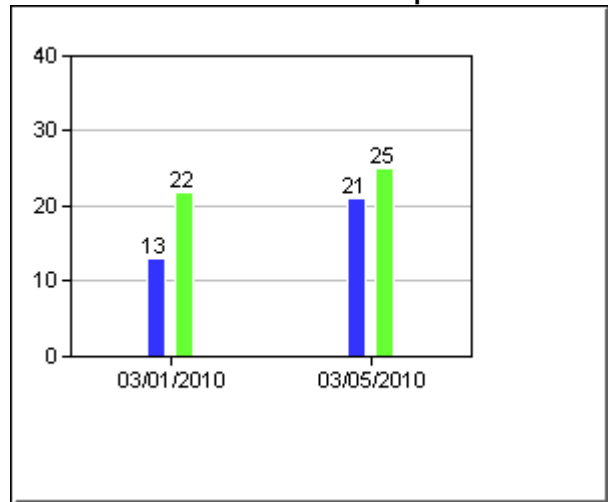
Measured with dual inclinometers

Extensor Carpi Radialis/Ulnaris



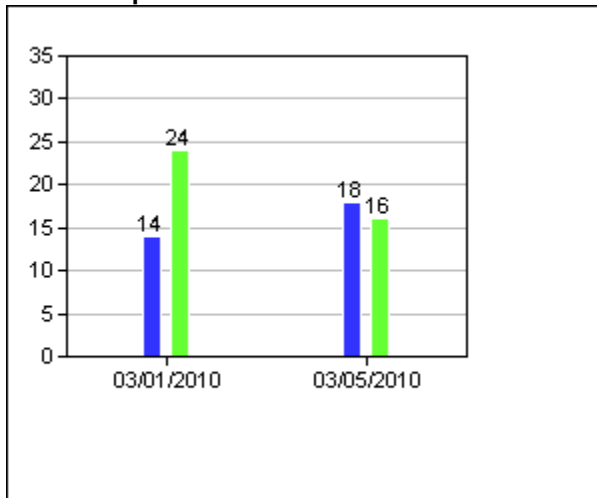
Left
Right
Measured with digital dynamometer

Stemocleidoma/Scaleni/Erector Spinae



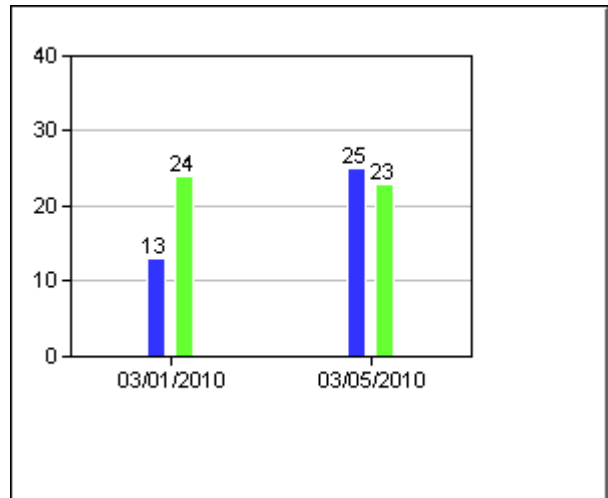
Left
Right
Measured with digital dynamometer

Flexor Carpi Ulnaris



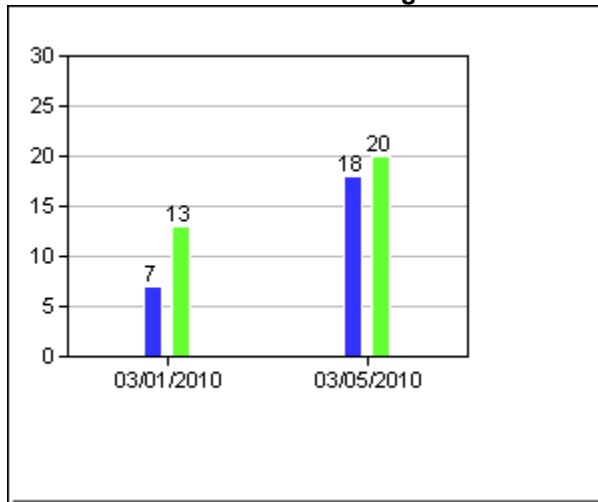
Left
Right
Measured with digital dynamometer

Abductor Pollicis Brevis



Left
Right
Measured with digital dynamometer

1st Dorsal Interosseus- Index Finger



Left

Right

Measured with digital dynamometer